

# Early Cambrian trace fossils at the northern margin of the Arabian Plate; Telbesmi Formation, Turkey

HURIYE DEMİRCAN<sup>1</sup>, SEMİH GÜRSU<sup>2</sup> and M. CEMAL GÖNCÜOĞLU<sup>3</sup>

<sup>1</sup> Department of Geological Research, General Directorate of Mineral Research and Exploration (MTA), 06520, Ankara, Turkey. E-mail: asmin68@yahoo.com.tr

<sup>2</sup> Department of Geological Engineering, Muğla Sıtkı Koçman University, Muğla

<sup>3</sup> Department of Geological Engineering, Middle East Technical University, Ankara

## ABSTRACT:

Demircan, H., Gürsu, S. and Göncüoğlu, M.C. 2018. Early Cambrian trace fossils at the northern margin of the Arabian Plate; Telbesmi Formation, Turkey. *Acta Geologica Polonica*, **68** (2), 135–145. Warszawa.

The Telbesmi Formation, at the northern margin of the Arabian Plate, Turkey, is composed of alternating dark-brown, pinky-brown fluvial arkosic sandstone/mudstones with thin-bedded cherty limestones and channel conglomerates. The formation contains rare and poorly diversified trace fossils. The siltstone/sandstone beds of levels 1 and 2 of the formation yielded, however, a moderately diverse assemblage composed of: *Cochlichnus* isp., *Palaeophycus* isp., *Planolites beverleyensis*, *Teichichnus* isp. and *Treptichnus rectangularis*. This assemblage, made up of traces left by deposit feeding organisms, represents the *Scoyenia* ichnofacies. *Treptichnus rectangularis* and *Palaeophycus* isp., of the assemblage, can be considered markers for the base of the Cambrian in southeast Turkey.

**Key words:** Ichnofossils; Telbesmi Formation; Early Cambrian; Derik (SE Turkey).

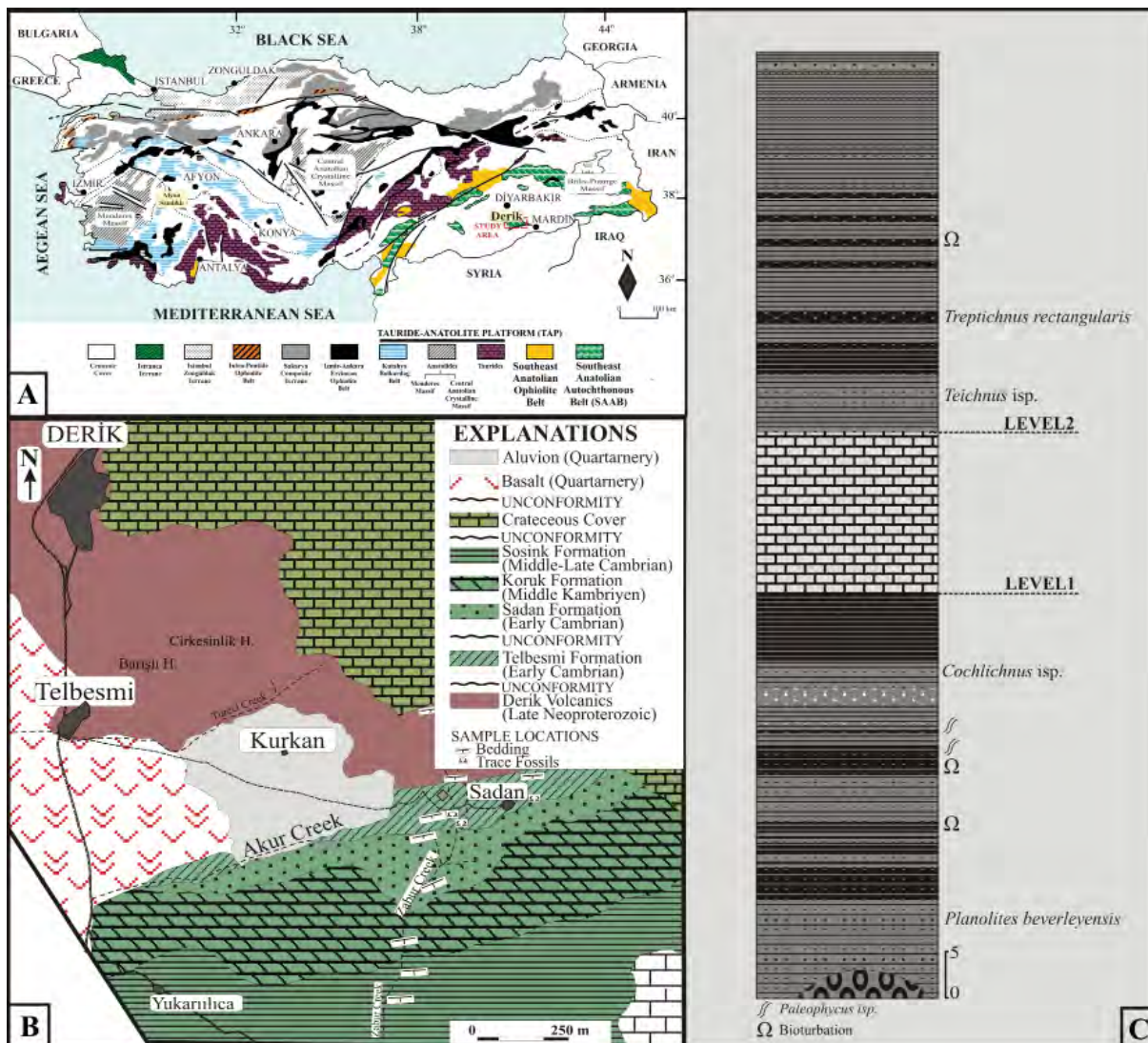
## INTRODUCTION

The diversity and complexity of trace fossils across the Edicaran–Cambrian boundary was described and discussed first by Seilacher (1956). He concluded that trace fossils were rare across the Late Neoproterozoic/Cambrian boundary because the activity of soft bodied benthic life at the earliest Cambrian was limited (cf. subsequent study by Crimes and Harper 1970). Little is still known about trace fossil producers from the Edicaran–Cambrian boundary interval.

The Edicaran–Cambrian boundary, as demonstrated in the stratotypic Fortune Head section (Newfoundland) and elsewhere (e.g., Narbonne *et al.* 1987; Brasier *et al.* 1994; Landing 1994; Jensen 2003; Buatois *et al.* 2013; Peng *et al.* 2012), is defined by the first occurrence of *Phycodes pedum*, being the index taxon of the eponymous zone (Landing 1994). The

index taxon is currently referred to *Treptichnus pedum* (Jensen and Grant 1993) or *Trichophycus pedum* (Geyer and Uchman 1995), and characterizes a shallow subtidal setting (Crimes 2001). The stratigraphic range of the *T. pedum* Zone in Gondwanaland, has been discussed recently (e.g., Elicki 2007; Wilson *et al.* 2012, and references therein).

In SE Turkey, the Edicaran–Cambrian boundary represents fluvial conditions, including alluvial-fan and lagoonal deposits (e.g., Ghienne *et al.* 2010), which resulted from the erosion, denudation and/or block faulting which produced the features of sediments deposited in extensional basins (Husseini 2000; Amireh *et al.* 2008). The equivalent Ediacaran–Cambrian boundary successions are known widely from the northern margin of Gondwanaland and from peri-Gondwanan terranes that crop out in Spain (Iberia Massif e.g. Fernandez-Suarez *et al.* 2000),



Text-fig. 1. A – Location of the study area (after Göncüoğlu 2010). B – Geological map of the Telbesmi Formation (modified after from Gürsu et al. 2015). C – Generalized section of the Telbesmi Formation (own observations)

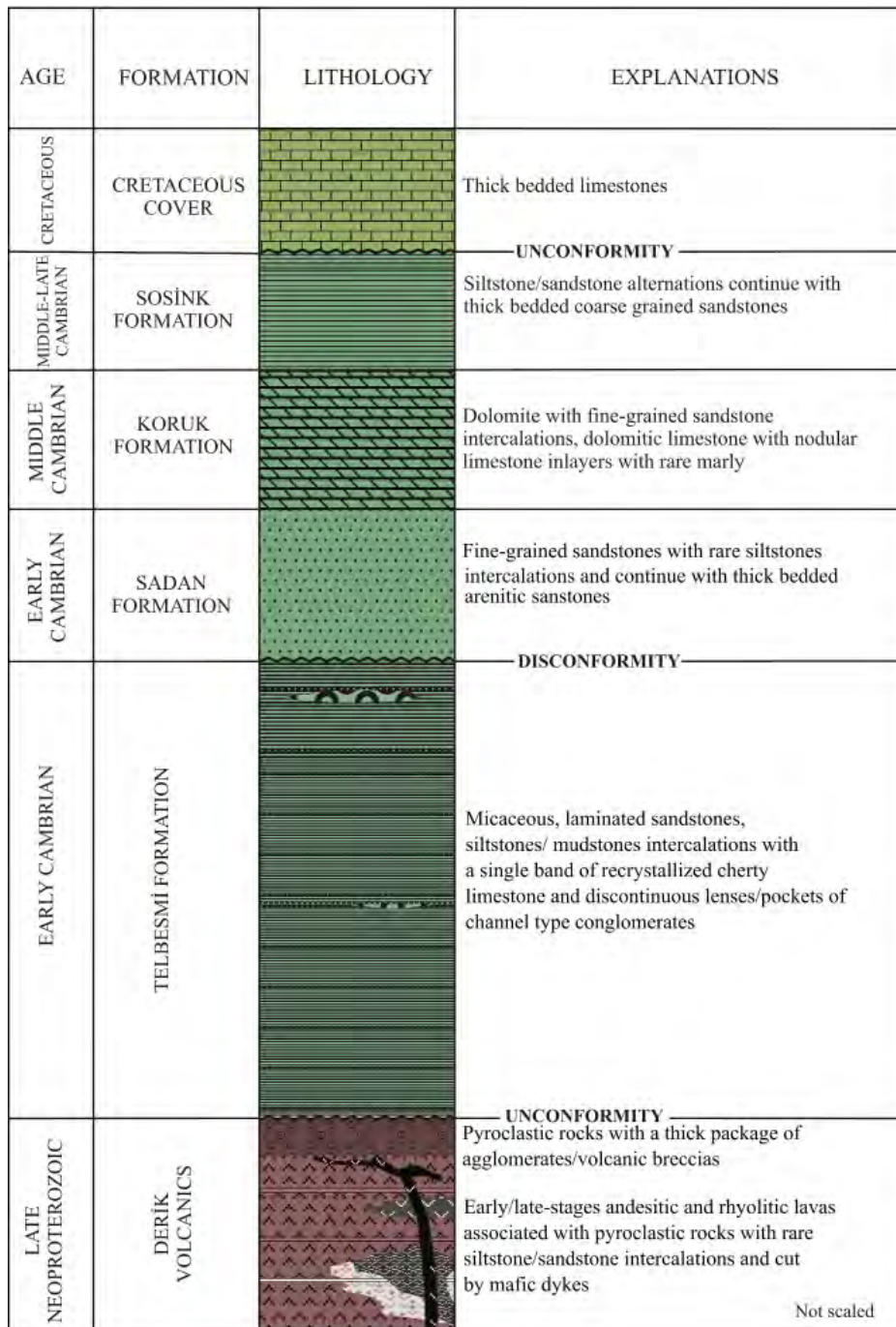
France (west/east Avalonia and Cadomia, Murphy et al. 2004), Germany (Dörr et al. 2002), Czech Republic (Bohemian Massif; cf. Chlupáč et al. 1998), Algeria (e.g., Lottaroli et al. 2009), Morocco (Poucllet et al. 2007), Libya (Abdalsalam et al. 2002), Egypt (El-Araby et al. 1999; Khalifa et al. 2006) in northern Turkey (Dean et al. 1981, 1986; Kozlu and Göncüoğlu 1997, Gürsu et al. 2004; Gürsu and Göncüoğlu 2005); Jordan (Amireh et al. 2008; Hofmann et al. 2012), Israel (Avigad et al. 2003), Saudi Arabia (Dabbagh and Rogers 1983), Iran (Nadimi 2007), and India (Desai et al. 2010; Parcha and Pandley 2011). They are also known from Mexico (Oaxaquia Yucatan), Honduras and Guatemala (Chortis Block) in Middle America (Ortega-Gutierrez et al. 1995). The Early

Cambrian biochronology, based on ichnofossils, in the Central Taurides of the Tauride-Anatolite Platform have recently been reported by Erdoğan et al. (2004) and Gürsu and Göncüoğlu (2007).

The aim of this study is to describe and discuss the trace fossil assemblage from the early Cambrian Telbesmi Formation, exposed around Derik-Mardin, south Anatolia, Turkey (Text-fig. 1A, B).

#### GEOLOGICAL SETTING

The Ediacaran–Cambrian succession of the Derik-Mardin area represents the Southeast Anatolian Autochthon Belt (Göncüoğlu et al. 1997) located

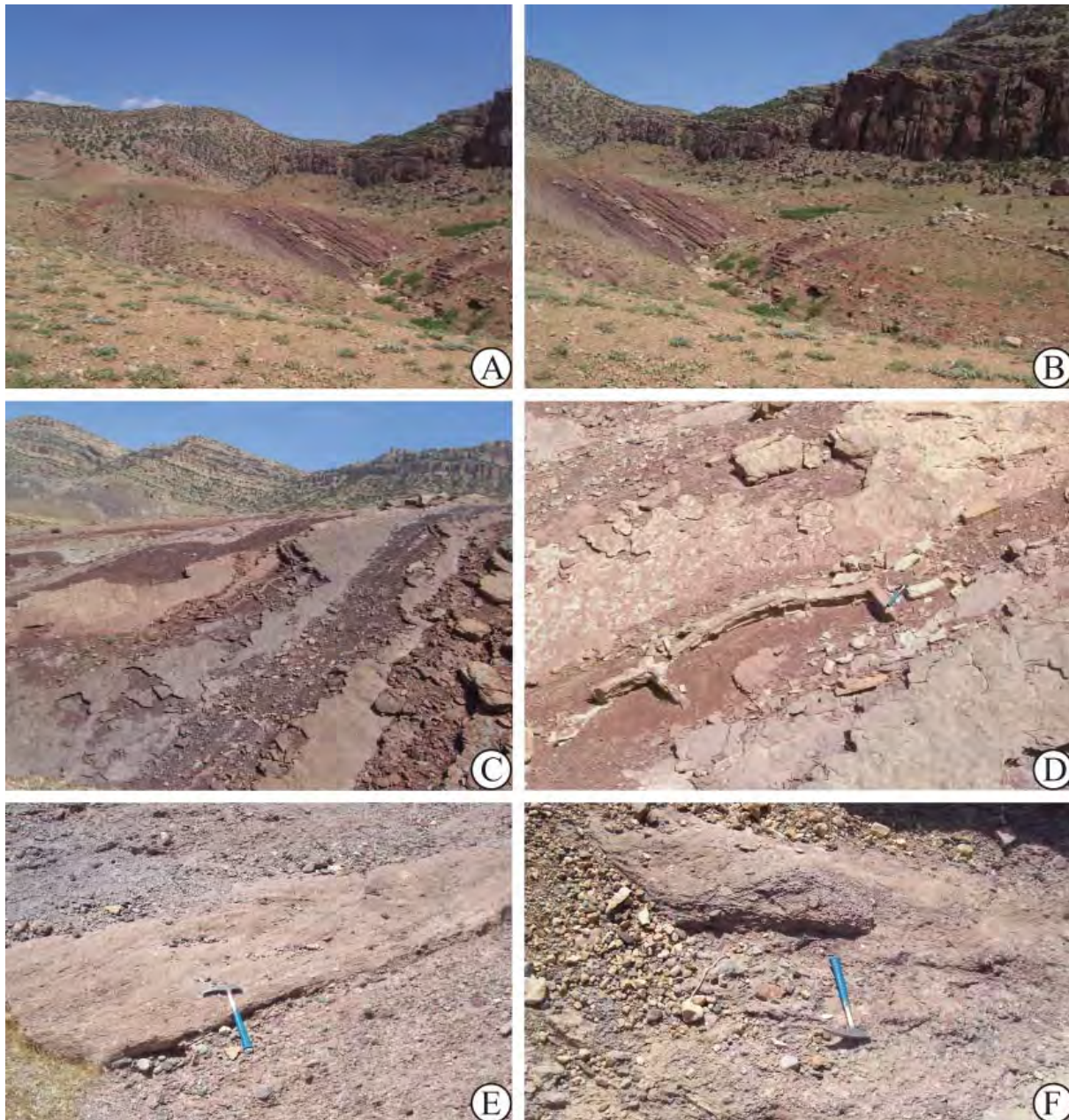


Text-fig. 2. Generalized columnar section of the Derik deposits in the study area (modified after from Gürsu *et al.* 2015)

at the northern margin of the Arabian Plate (Text-fig. 1A). The Early Palaeozoic succession of the area is composed of the Derik volcanics and, in stratigraphic order, of the Telbesmi, Sadan, Koruk and Sosink formations (e.g., Göncüoğlu and Kozlu 2000). The Palaeozoic succession is covered unconformably by Cretaceous sediments (Text-fig. 2).

The 350 m thick Telbesmi Formation is composed of alternating dark- and pinky-brown micaceous, laminated arkosic sandstones, siltstones and mudstones, interlayered with lenses/pockets of channel type conglomerates. A single band of cherty carbonate occurs in the upper part of the formation (Text-figs 3, 4, 5).





Text-fig. 3. Field occurrence of the facies of the Telbesmi Formation. A – Mudstone intercalated with very fine-grained sandstones and siltstones; B – Dry land facies dominated by reddish sandstone; C – Mudstones intercalated with fine-grained sandstones; D – Sandstones intercalated with mudstones, overlying mudstones; E – Cross-bedded lens of sandstones in mudstones; F – Channel-type sandstone

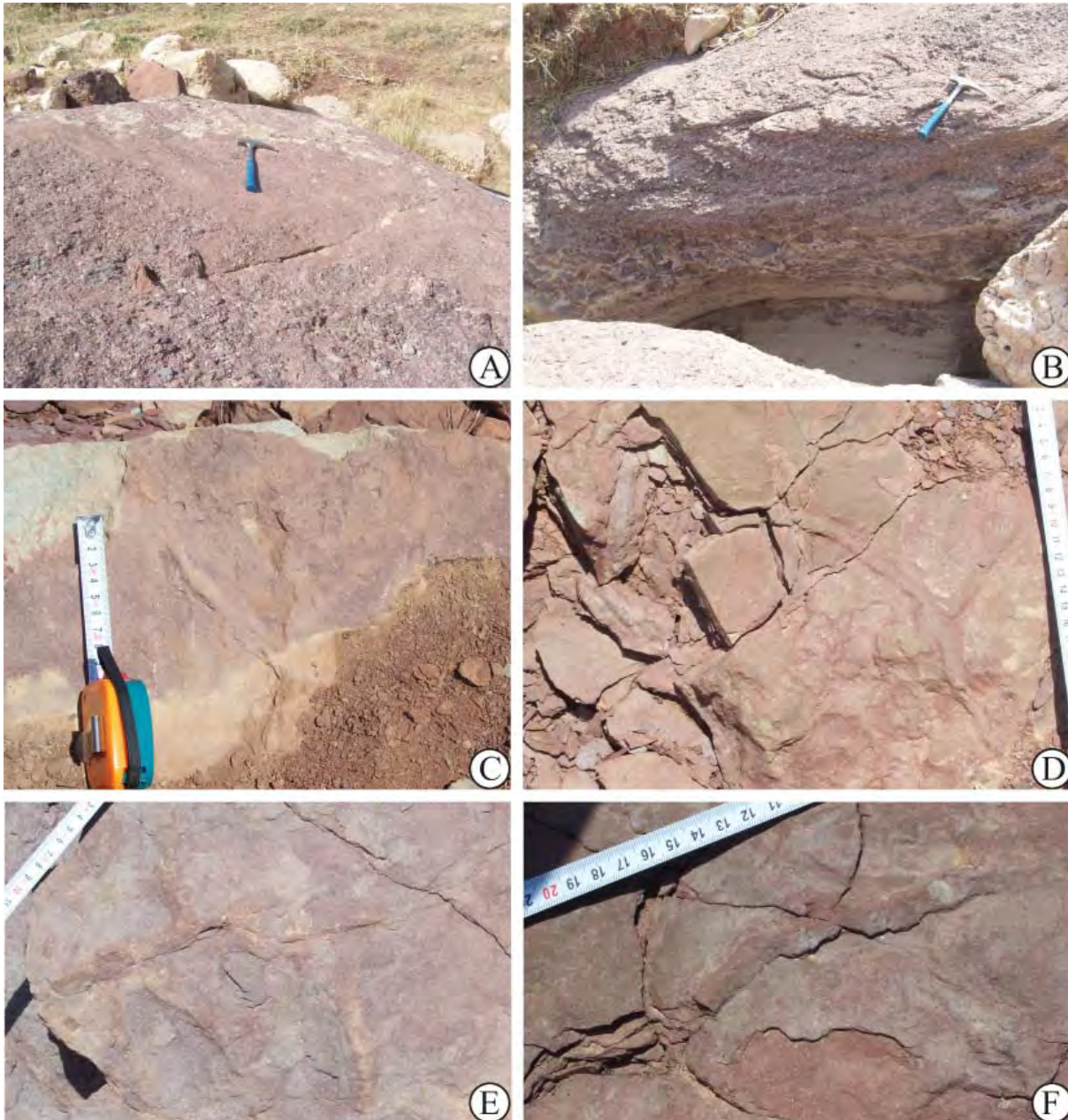
The Telbesmi Formation overlies unconformably the Derik volcanics, which consists of Late Neoproterozoic andesitic and rhyolitic lavas associated with pyroclastic rocks (Gürsu *et al.* 2015). The latter unit contains rare siltstone/sandstone intercalations and is cut by mafic dykes. Its upper part includes pyroclastic rocks and a thick package of agglomerates/volcanic breccias.

The transition to the overlying middle Cambrian Sadan Formation is transitional.

#### DESCRIPTION OF THE TRACE FOSSILS

The trace fossils from the Telbesmi Formation described herein come mostly from two horizons





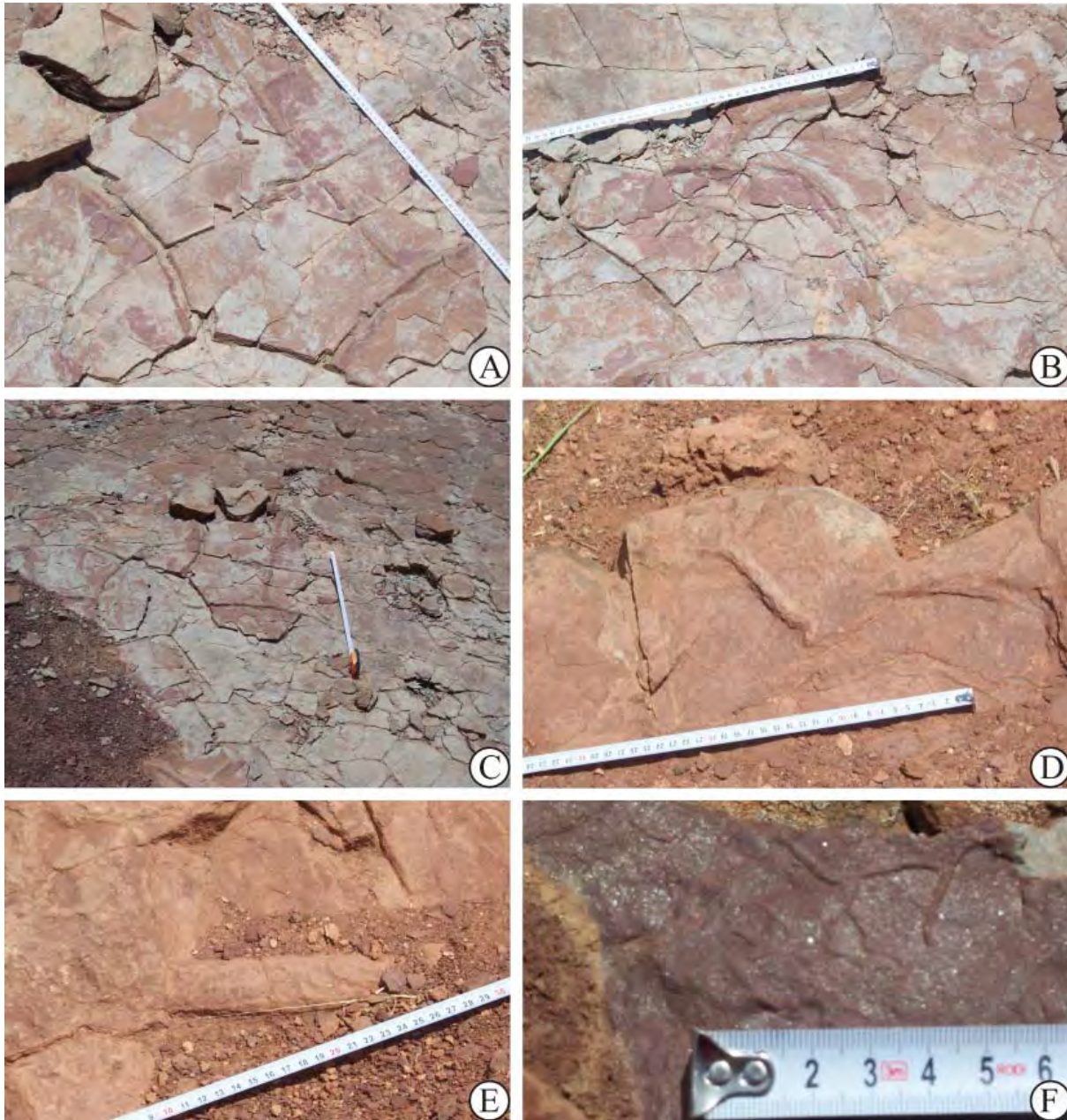
Text-fig. 4. Facies of the Telbesmi Formation and trace fossils; A-B – Channel-type sandstone; C-F – Some trace fossils from the studied area

in the upper part of the formation (UTM coordinates: 0617625, 4131925; 0616425, 4131720; 0616165, 4231875). The horizons are referred to here as Level 1 and Level 2, and are separated by an interval of cherty recrystallized limestones (Text-fig. 1C).

The material studied is housed in the repository of the General Directorate of Mineral Research and Exploration, Department of Geological Research in Ankara. Some of the studied specimens were documented *in situ* and were not collected.

***Cochlichnus* isp.** (Text-fig. 6A). This is an epichnial burrow showing a regularly sinuous trace. The trace is 1–2 mm wide and shows a uniform diameter all along its burrow. The amplitude of the meanders ranges from 12–15 mm. *Cochlichnus* is a facies-crossing trace fossil and occurs in a great variety of marine to nonmarine environments. It is produced by various invertebrates, including annelids and nematodes (Fillion and Pickerill 1990) and is considered to be a grazing and locomotion trace.





Text-fig. 5. Trace fossils of the Telbesmi Formation. A-C – Field view of the some horizontal burrows; D, E – *Planolites beverleyensis*; F – *Cochlichnus* isp.

The studied specimens come from the lower part of Level 1 of the Telbesmi Formation. It is known from the Early Cambrian of Central Australia (Glaessner 1969), Finnmark (Banks 1970), and New South Wales (Webby 1970), Spain (Crimes *et al.* 1977); it is also known from the Cenozoic (Häntzschel 1975).

*Palaeophycus* isp. (Text-fig. 6B). This is an endichnial, straight to slightly sinuous, unbranched, hori-

zontal, lined burrow. In cross section it is circular to elliptical, 7–10 mm long and 5 mm wide. The burrow fill is identical to the host rock. *Palaeophycus* resembles *Planolites* (Osgood 1970; Pickerill and Forbes 1979). Pemberton and Frey (1982) concluded that *Planolites* is an unlined burrow filled with sediment having textural characters unlike that of the host rock, whereas *Palaeophycus* is a lined burrow filled with sediment typically identical to those of





Text-fig. 6. Trace fossils from Telbesmi Formation. A – *Cochlichnus* isp.; B – *Palaeophycus* isp.; C – *Planolites beverleyensis*; D-E – *Teichichnus* isp.; F – ?*Treptichnus rectangularis*

the surrounding matrix. *Palaeophycus* is considered to be a combined and dwelling burrow formed by worm-like animals. The studied specimens are from the middle part of Level 1 and lower part of Level 2 of the Telbesmi Formation. It ranges from the Ediacaran to Recent (Pemberton and Frey 1982).

***Planolites beverleyensis* (Billings, 1862)** (Text-fig. 6C). These traces occur on the bedding surfaces as

convex epichnia, or as full relief exichnia and as endichnia. The burrows are cylindrical, straight or slightly bent, with a smooth surface. They are unlined and arranged parallel or slightly oblique to the bedding. The burrow fill is different from the host rock. *Planolites* is a facies-crossing ichnogenus, ranging from the Precambrian to Recent and is so simple in form that many different animal species were probably responsible for it (Crimes and Anderson 1985).

The studied specimens are from the middle part of the Telbesmi Formation. It has been identified in the Lower Cambrian of the Holy Cross Mountains (Orłowski 1989).

***Teichichnus isp.*** (Text-fig. 6D). *Teichichnus* is a wall-like, internally laminated trace produced by vertical migration of horizontal cylindrical burrows. The burrows show internal thin, hemicylindrical, concave-upward laminae which are horizontal or slightly inclined. The sides of these structures are parallel in some cases. Others are irregular or distorted. Structures of this type can be produced as a result of disturbance and redistribution of sediment by displacement of the burrow system, leaving a reworked filling. Some modern arthropods and other organisms backfill their burrows, leaving a cylindrical, plugged tube, (Kennedy and MacDougall 1969). Some burrows are also superficially similar to *Teichichnus*; they are, however, produced by taphonomic effects, i.e. the redistribution of sediment dislodged from the burrow roof (Shinn, 1968). *Teichichnus isp.* comes from lower part of Level 2 of Telbesmi Formation. The ichnogenus is widely known from the Cambrian (Chisholm 1970) to Cenozoic (Frey and Howard 1970).

**?*Treptichnus rectangularis* Orłowski and Żylinska 1996** (Text-fig. 6E–F). These are horizontal burrows composed of short, more-or-less straight to slightly curved cylindrical units, oval in cross-section, with a variable angle of branching and, in some forms, with a tendency of right angled branching. Although particular segments of the burrow differ in shape, diameter and length, there is no apparent gradient in their size along the specimen. This is a common representative of the Cambrian ichnofauna. Some of the *T. rectangularis* burrows are similar to burrows identified as *Phycodes pedum* Seilacher (1955) in the early Cambrian of the Holy Cross Mountains (Orłowski 1989). The studied material comes from Level 1 of the Telbesmi Formation. The genus ranges from the early Cambrian (Paczesna, 1989) to the Eocene (Crimes *et al.* 1981).

## DISCUSSION AND CONCLUSION

The Telbesmi formation is stratigraphically confined between the Derik Volcanics and the Sadan formation, and the newly determined ichnofossils are of Early Cambrian (Terreneuvian) age following the International Chronostratigraphic Chart of 2012 (Gradstein *et al.* 2012). This determined assemblage,

made up of deposit feeding organisms, represents the *Scoyenia* ichnofacies. The depositional age of the upper parts of the formation is interpreted to be Early Cambrian (Terreneuvian, stage 2-Fortunean) rather than Infracambrian as previously suggested by Ketin (1966). Ghienne *et al.* (2010) evaluated the depositional environment of the formation as dry land with alluvial-fan and lagoon deposits. These sedimentary features of the formation clearly indicate that depositional features of the formation are indicative of a fluvial transition. The index zone fossil *Treptichnus pedum* is not present in the formation because of the latter's fluvial depositional character. Buatois *et al.* (2013) declare that the *Treptichnus pedum* ichnotaxon appears in low-energy offshore wave-dominated marine settings, also in the shallow water intertidal and shallow-subtidal zones of tide-dominated systems, whereas the studied rocks were deposited in fluvial environments.

The overlying Sadan formation mainly consists of arkosic sandstone with rare siltstone/mudstone interlayers and is thought to have been laid down as transgressive, fluvial dominated clastics (meandering channels of fluvial to tidal origin; Ghienne *et al.* 2010). The succession is conformably followed by the Early –Middle Cambrian trilobite bearing Koruk Formation which corresponds to the Sadan Dolomite of Kellog (1960) and is the equivalent of the Koruk Limestone/Dolomite Formation of Schmidt (1966). The succession is composed of thickly bedded dolomite, followed by thinly bedded, grey and pink, nodular limestone beds with minor horizons of sandstone (for details see Dean *et al.* 1981; Dean 1982) and is dated by its trilobite bearing grey limestone members as belonging to the traditional Middle Cambrian (details in Dean *et al.* 1981; Dean 1982), which approximately corresponds to the unnamed “Series 3” proposed by the International Chronostratigraphic Chart of 2012 (Gradstein *et al.* 2012). The formation is conformably overlain by the siliciclastic-dominated rocks of the Sosink Formation, which is assigned to the Late –Middle Cambrian corresponding approximately to the Furongian by means of its trilobite and acritarch content (details in Dean 1982).

The stratigraphic distribution of the ichnofossils is a key to deciphering the Late Neoproterozoic–Cambrian transition. The assemblage of ichnofossils recently found in the Telbesmi Formation in SAAB is stratigraphically important and is useful for the correlation of this section with the neighboring areas. The present assemblage of ichnofossils we recently discovered can also be correlated with the stratotypic Newfoundland section (see Narbonne *et al.* 1987), as



well as other equivalent sections of Tethyan regions (e.g., Brasier *et al.* 1994; Amireh *et al.* 2008; Parcha and Pandey 2011; Hofmann *et al.* 2012).

Another Turkish locality with Terreneuvian ichnofossils is on the Tautide Anatolide Platform (TAP) in the central Taurides (Text-fig. 1), where the Early Cambrian succession disconformably overlies the Late Neoproterozoic basement (Gürsu *et al.* 2004). The succession starts with a basal conglomerate and includes meta-mafic lavas and pyroclastic rocks followed by an alternation of red fluvial conglomerates, sandstones, siltstones and mudstones (e.g., Gürsu and Göncüoğlu 2005). Ichnofossils occur in the uppermost part of this succession in the Sandıklı area (Erdoğan *et al.* 2004) where there is present the *Skolithos* ichnofacies, consisting of *Cruziana* ?*fasciculata*, *C.* ?*salomonis*, ?*Cruziana* isp., ?*Diplichnites* isp., *Monomorphichnus* isp., *Petalichnus* isp., *Rusophycus* ?*avalonensis*, *R.* ?*latus*, *Arenicolites* isp., cf. *Altichnus foeyni*, *Planolites* isp., *Skolithos* isp., and ?*Treptichnus* isp indicating Terreneuvian (earliest Cambrian). This succession has been evaluated as being typical of high energy environments with loose, sandy (well sorted to slightly muddy) substrate in intertidal to shallow subtidal zones by Erdoğan *et al.* (2004) and represents the *Rusophycus avalonensis* zone above *Treptichnus pedum* (*Phycodes pedum*). Besides the presence of a basic volcanic unit in Sandıklı, the main difference between these locations concerns the ichnofacies. The trace fossils in the Telbesmi Formation consist of ichnofossils representing the *Scoyenia* ichnofacies that is typically associated with fluvial sedimentary environments representing the *Treptichnus pedum* (*Phycodes pedum*) Zone. The ichnofossil assemblage indicates that the ichnocenosis is deposit feeding organisms.

To conclude, based on their ichnofossil contents, the Early Cambrian siliciclastic rocks in the Derik (SAAB) and Sandıklı (TAP) areas were deposited in different sedimentary environments as alluvial-fluvial (Derik area) and intertidal to shallow subtidal marine environments (Sandıklı area) during the Terreneuvian (Early Cambrian). These distinct depositional environments may indicate that SAAB and TAP were in different paleogeographic positions but close to each other during the Terreneuvian (Early Cambrian).

### Acknowledgements

This study was supported by the General Directorate of Mineral Research and Exploration (MTA) in Ankara within the frame of grant 2013-30-14-19. Additional support was provided

by the TUBITAK-Scientific and Technical Research Council of Turkey (CAYDAG-Project No: 111Y326).

### REFERENCES

- Abdalselam M.G., Liegeois, J.P. and Stern, R.J. 2002. The Saharan Metacraton. *Journal of African Earth Sciences*, **34**, 119–136.
- Amireh, B.S., Amaireh, M.N. and Abed, A.M. 2008. Tectono-sedimentary evolution of the Umm Ghaddah Formation (late Ediacaran–early Cambrian) in Jordan. *Journal of Asian Earth Sciences*, **33**, 194–218.
- Avigad, D., Kolodner, McWilliams, M., Persing, H. and Weissbrod, T. 2003. Origin of northern Gondwana Cambrian sandstone revealed by detrital zircon SHRIMP dating. *Geology*, **31**, 227–230.
- Banks, N.L. 1970. Trace fossils from the late Precambrian and Lower Cambrian of Finnmark, Norway. In: Crimes, T.P. and Harper, J.C. (Eds), Trace Fossils. Geological Journal Special Issue, 3, 19–34.
- Billings, E. 1862. New species of fossils from different parts of the Lower, Middle and Upper Silurian rocks of Canada. *Palaeozoic Fossils*, 1, 96–102. Geological Survey of Canada, Advance Sheets.
- Brasier, M., Cowie, J. and Taylor, M. 1994. Decision on the Precambrian–Cambrian boundary stratotype. *Episodes*, **17**, 3–8.
- Buatois, L.A. Almond, J. and Germs, G.J.B. 2013. Environmental tolerance and range offset of *Treptichnus pedum*: Implications for the recognition of the Ediacaran–Cambrian boundary. *Geology*, **41**, 519–522.
- Chisholm, J.I. 1970. *Teichichnus* and related trace-fossils in the Lower Carboniferous at St. Monance, Scotland. *Geological Survey of Great Britain Bulletin*, **32**, 21–51.
- Chlupáč, I., Havlíček, V., Kříž, J., Kukul, Z. and Štorch, P. 1998. Palaeozoic of the Barrandian (Cambrian to Devonian), 183 p. Czech Geological Survey; Prague.
- Crimes, T.P. 2001. Evolution of the Deep-Water Benthic Community. In: Zhuravlev, A.Yu. and Riding, R. (Eds), The ecology of the Cambrian radiation, pp. 275–296. Columbia University Press; New York.
- Crimes, T.P. and Harper, J.C. (Eds) 1970. Trace Fossils. 547 p. Seel House Press; Liverpool.
- Crimes, T.P. and Anderson, M.M. 1985. Trace fossils from late Precambrian–early Cambrian strata of southeastern Newfoundland (Canada): Temporal and Environmental implications. *Journal of Paleontology*, **59**, 310–343.
- Crimes, T.P., Legg, L., Marcos, A. and Arbolea, M. 1977. ?Late Precambrian–low Lower Cambrian trace fossils from Spain. In: Crimes, T.P. and Harper, J.C. (Eds), Trace Fossils, 2. Geological Journal Special Issue 9, 91–138.
- Dabbagh, M.E. and Rogers, J.J.W. 1983. Depositional environments and tectonic significance of the Wajid Sandstone of southern Saudi Arabia. *Journal of African Earth Sciences*, **1**, 47–57.

- Dean, W.T. 1982. Middle Cambrian trilobites from the Sosink Formation, Derik-Mardin district, south-eastern Turkey. *Bulletin of the British Museum (Natural History), Geology*, **36**, 1–41.
- Dean, W.T., Monod, O. and Perinçek, D. 1981. Correlation of Cambrian and Ordovician rocks in Southeastern Turkey. *T.C. Petrol İşleri Genel Müdürlüğü Dergisi*, **25**, 269–291.
- Dean, W.T., Monod, O. and Günay, Y. 1986. Lower Paleozoic stratigraphy in the Southern and Central Amanous Mountains, South Central Turkey. *Geological Magazine*, **123**, 215–226.
- Dörr, W., Zulauf, G., Fiala, J., Franke, W. and Vejnar, Z. 2002. Neoproterozoic to Early Cambrian history of an active plate margin in the Tepla-Barrandian unit—a correlation of U-Pb isotopic-dilution-TIMS ages (Bohemia, Czech Republic). *Tectonophysics*, **352**, 65–85.
- El-Araby, A. and Abdel-Motelib, A. 1999. Depositional facies of the Cambrian Araba Formation in the Taba region, East Sinai, Egypt. *Journal of African Earth Sciences*, **29**, 429–447.
- Elicki, O. 2007. Facies development during late Early–Middle Cambrian (Tayan Member, Burj Formation) transgression in the Dead Sea Rift valley, Jordan. *Carnets de Géologie*, **7**, 1–20.
- Erdoğan, B., Uchmann, A., Güngör, T. and Özgül, N. 2004. Lithostratigraphy of the Lower Cambrian metaclastics and their age based on trace fossils in the Sandıklı region, south-western Turkey. *Geobios*, **38**, 346–360.
- Fernandez-Suarez, J., Guitierrez-Alonso, G., Jenner, G.A. and Tubrett, M.N. 2000. New ideas on the Proterozoic–early Paleozoic evolution of NW Iberia; insights from U-Pb detrital zircon ages. *Precambrian Research*, **102**, 185–206.
- Filliön, D. and Pickerill, R.K. 1990. Ichnology of the Upper Cambrian? to Lower Ordovician Bell Island and Wabana Groups of eastern Newfoundland, Canada. *Palaeontographica Canadiana*, **7**, 1–119.
- Frey, R.W. and Howard, J.D. 1970. Comparison of Upper Cretaceous ichnofaunas from siliceous sandstones and chalk, western interior region, U.S.A. In: Crimes, T.P. and Harper, J.C. (Eds), Trace Fossils, 2. Geological Journal Special Issue 3, 141–166.
- Geyer, G. and Uchmann, A. 1995. Ichnofossil assemblages from the Nama Group (Neoproterozoic–Lower Cambrian) in Namibia and the Proterozoic–Cambrian boundary problem revisited. In: Geyer, G. and Landing, E. (Eds), Marocco’95. The Lower–Middle Cambrian standard of western Gondwana. *Beringeria Special Issue 2*, 175–202.
- Ghienne, J.F., Monod, O., Kozlu, H. and Dean, W.T. 2010. Cambrian–Ordovician depositional sequences in the Middle East: A perspective from Turkey. *Earth Science. Reviews*, **101**, 101–146.
- Glaessner, M.F. 1969. Trace fossils from the Precambrian and basal Cambrian. *Lethaia*, **2**, 369–393.
- Göncüoğlu, M.C. 1997. Distribution of Lower Paleozoic Units in the Alpine Terranes of Turkey: paleogeographic constraints. In: Göncüoğlu, M.C. and Derman, A.S. (Eds), Lower Paleozoic Evolution in northwest Gondwana. *Turkish Association of Petroleum Geologists Special Publication*, **3**, 13–24.
- Göncüoğlu, M.C., 2010. Introduction to the Geology of Turkey: Geodynamic evolution of the pre-Alpine and Alpine terranes. MTA, *Monography Series*, **5**, 1–66.
- Göncüoğlu, M.C. and Kozlu, H. 2000. Early Paleozoic evolution of the NW Gondwanaland: data from southern Turkey and surrounding regions. *Gondwana Research*, **3**, 315–323.
- Göncüoğlu, M.C., Dirik, K. and Kozlu, H. 1997. General Characteristics of pre-Alpine and Alpine Terranes in Turkey: Explanatory notes to the terrane map of Turkey. *Annales Geologique de Pays Hellenique*, **37**, 515–536.
- Gradstein, F.M, Ogg, J.G., Schmitz, M.D. and Ogg, G.M. 2012. The Geologic Time Scale 2012. Elsevier; Boston. doi: 10.1016/B978-0-444-59425-9.00004-4.
- Gürsu, S. and Göncüoğlu, M.C. 2005. Early Cambrian back-arc volcanism in the Western Taurides, Turkey: Implications for the rifting along northern Gondwanan margin. *Geological Magazine*, **142**, 617–631.
- Gürsu, S. and Göncüoğlu, M.C. 2007. Comments on “Deformation of the Lower Cambrian Sequence in the Sandıklı Region (Afyon), central Turkey” by T. Güngör. *Geodinamica Acta*, **20/5**, 353–362.
- Gürsu, S., Göncüoğlu, M.C. and Bayhan, H. 2004. Geology and petrology of the pre-Middle Cambrian rocks in Sandıklı area: Implications for the Pan-African evolution in NW Gondwanaland. *Gondwana Research*, **7/4**, 923–935.
- Gürsu, S., Möller, A., Göncüoğlu, M.C., Köksal, S., Demircan, H., Toksoy Köksal, F., Kozlu, H. and Sunal, G. 2015. Neoproterozoic continental arc volcanism at the northern edge of the Arabian Plate, SE Turkey. *Precambrian Research*, **258**, 208–233.
- Hall, J. 1847. Palaeontology of New York. Volume I. Containing descriptions of the organic remains of the Lower Division of the New York System (Equivalent to the Lower Silurian rocks of Europe), 338 p. C. van Benthuysen; Albany, New York.
- Häntzschel, W. 1975. Trace fossils and problematica. In: Teichert, C. (Ed.), Treatise on Invertebrate Paleontology, W (Supplement 1), 1–269. University of Kansas Press; Lawrence, Kansas.
- Hitchcock, E. 1858. Ichnology of New England. A report on the sandstone of the Connecticut Valley, especially its fossil footmarks, 220 p. William White; Boston.
- Hofmann, R., Gabriela, M., Elicki, O. and Shinaq, R. 2012. Paleocological and biostratigraphic significance of trace fossils from shallow- to marginal-marine environments from the middle Cambrian (Stage 5) of Jordan. *Journal of Paleontology*, **86**, 931–955.
- Husseini, M.I. 2000. Origin of the Arabian plate structures: Amar collision and najd rift. *GeoArabia*, **5**, 527–542.
- Jensen, S. 2003. The Proterozoic and Earliest Cambrian Trace Fossil Record; Patterns, Problems and Perspectives. *Integrative and Comparative Biology*, **43**, 219–228.



- Jensen, S. and Grant, S.W.F. 1993. Implications from trace fossils for the Vendian–Cambrian boundary in the Torne-tråsk Formation, northern Sweden. In: Siverson, M. (Eds), *Lundadagarna I Historisk Geologi och Paleontologi*, 15–16 March 1993, III, Abstracts, 15. Lund Publications in Geology 109.
- Kellog, H.E. 1960. Stratigraphic report, Derik-Mardin area. *Petrol İşleri Genel Müdürlüğü Teknik Arşivi*, **126**, 1–34.
- Kennedy, W.J. and MacDougall, J.D.S. 1969. Crustacean burrows in Weald Clay (Lower Cretaceous) of southeastern England and their environmental significance. *Palaeontology*, **12**, 459–471.
- Ketin, İ. 1966. Güneydoğu Anadolunun Kambriyen teşekkülleri ve bunların Doğu İran Kambriyen ile mukayesesi. *Maden Tetkik ve Arama Dergisi*, **66**, 75–87. [In Turkish with English abstract]
- Khalifa, M.A., Soliman, H.E. and Wanas, H.A. 2006. The Cambrian Araba Formation in northeastern Egypt; facies and depositional environments. *Journal of Asian Earth Sciences*, **27**, 873–884.
- Kozlu, H. and Göncüoğlu, M.C. 1997. Stratigraphy of the Infracambrian rock-units in the Eastern Taurides and their correlation with similar units in Southern Turkey. In: Göncüoğlu, M.C. and Derman, A.S. (Eds), Early Paleozoic in NW Gondwana. *The Bulletin of Turkish Association of Petroleum Geologists, Special Publication*, **61**, 50–61.
- Landing, E. 1994. Precambrian–Cambrian boundary global stratotype ratified and a new perspective of Cambrian time. *Geology*, **22**, 179–182.
- Lottaroli, F., Craig, J. and Thusu, B. 2009. Neoproterozoic–Early Cambrian (Infracambrian) hydrocarbon prospectivity of North Africa: A synthesis. *Geological Society, London, Special Publications*, **326**, 137–156.
- Miller, S.A. 1889. *North American Geology and Palaeontology for the Use of Amateurs, Students, and Scientists*, 718 p. Press of Western Methodist Book Concern; Cincinnati.
- Murphy, B.M., Pisarevsky, S.A., Nance, R.D. and Keppie, J.D. 2004. Neoproterozoic–Early Paleozoic evolution of perigondwanan terranes: implications for Laurentia–Gondwana connections. *International Journal of Earth Sciences (Geologische Rundschau)*, **93**, 659–682.
- Nadimi, A. 2007. Evolution of the Central Iranian basement. *Gondwana Research*, **12**, 324–333.
- Narbonne, G.M., Myrow, P.M., Landing, E. and Anderson, M.M. 1987. A candidate stratotype for the Precambrian–Cambrian boundary, Fortune Head, Bruin Peninsula, southeast Newfoundland. *Canadian Journal of Earth Sciences*, **24**, 1277–1293.
- Nicholson, H.A. 1873. Contributions to the study of the errant annelides of the older Paleozoic rocks. *Royal Society London, Proceedings*, **21**, 288–290.
- Ortega-Gutierrez, F., Ruiz, J. and Centena-Garcia, E. 1995. Oaxaquia, a Proterozoic microcontinent accreted to North America during the late Paleozoic. *Geology*, **23**, 1127–1130.
- Orłowski, S. 1989. Trace fossils in the Lower Cambrian sequence in the Świętokrzyski Mountains, central Poland. *Acta Palaeontologica Polonica*, **34**, 211–231.
- Orłowski, S. and Żylinska, A. 1996. Non-arthropod burrows from the Middle and Late Cambrian of the Holy Cross Mountains, Poland. *Acta Palaeontologica Polonica*, **41**, 385–409.
- Parcha, S.K. and Pandey, S. 2011. Ichnofossils and their significance in the Cambrian successions of the Parahio Valley in the Spiti Basin, Tethys Himalaya, India. *Journal of Asian Earth Sciences*, **11**, 1097–1116.
- Pemberton, S.G. and Frey, W.F. 1982. Trace fossil nomenclature and the *Planolites*–*Palaeophycus* dilemma. *Journal of Paleontology*, **56**, 843–881.
- Peng, S., Babcock, L.E., and Cooper, R.A. 2012. The Cambrian Period. In: Gradstein, F.M. et al. (Eds), *The geologic time scale 2012*, Volume 2, pp. 437–488. Elsevier; Boston.
- Pickerill, R. K. and Forbes, W. H. 1979. Ichnology of the Trenton Group in the Quebec City area. *Canadian Journal of Earth Sciences*, **16**, 2022–2039.
- Poulet, A., Aarab, A., Fekkak, A. and Benharref, M. 2007. Geodynamic evolution of the northwestern Paleo-Gondwanan margin in the Moroccan Atlas at the Precambrian–Cambrian boundary. In: Linnemann, U., Nance, R.D., Kraft, P. and Zulauf, G. (Eds), *The evolution of the Rheic Ocean: From Avalonian–Cadomian active margin to Alleghenian–Variscan collision. Geological Society of America Special Paper*, **423**, 27–60.
- Schmidt, G.C. 1966. Stratigraphy of Lower Paleozoic rock units of petroleum district V-Turkey. *Petroleum Administration Publication*, **11**, 73–90.
- Seilacher, A. 1955. Spuren und Fazies im Unterkambrium. In: Schindewolf, O.H. and Seilacher, A. (Eds), *Beiträge zur Kenntnis des Kambriums in der Salt Range (Pakistan). Akademie der Wissenschaften und der Literatur zu Mainz, Mathematisch-naturwissenschaftliche Klasse, Abhandlungen*, No. 10, 11–143.
- Seilacher, A. 1956. Der Beginn des Kambriums als biologische Wende. *Neues Jahrbuch für Geologie und Paläontologie Abhandlungen*, **103**, 155–180.
- Shinn, E. A. 1968. Burrowing in recent lime sediments of Florida and the Bahamas. *Journal of Paleontology*, **42**, 879–884.
- Webby, B.D. 1970. Late Precambrian trace fossils from New South Wales. *Lethaia*, **3**, 79–109.
- Wilson, J.B., Grotzinger, J.P., Fischer, W., Hand, P., Jensen, S., Knoll, A.H., Abelson, J., Metz, M.L., Mcloughlin, N., Cohen, A.P. and Tice, M.M. 2012. Deep-water incised valley deposits at the Edicaran–Cambrian boundary in southern Namibia contain abundant *Treptichnus Pedum*. *Palaios*, **27**, 252–273.

Manuscript submitted: 28<sup>th</sup> September 2015

Revised version accepted: 15<sup>th</sup> January 2017