

Methylobacterium oxalidis sp. nov., isolated from leaves of *Oxalis corniculata*

Akio Tani,¹ Nurettin Sahin² and Kazuhide Kimbara³

Correspondence

Akio Tani

atani@rib.okayama-u.ac.jp

¹Institute of Plant Science and Resources, Okayama University, 2-20-1 Chuo, Kurashiki 710-0046, Okayama, Japan

²Mugla University, Egitim Fakultesi, 48000 Kötekli, Mugla, Turkey

³Faculty of Engineering, Shizuoka University, 3-5-1 Johoku, Naka-ku, Hamamatsu 432-8561, Shizuoka, Japan

A pink-pigmented, facultatively methylotrophic bacterium, strain 35a^T, was isolated from the leaves of *Oxalis corniculata*. Cells of strain 35a^T were Gram-reaction-negative, motile, non-spore-forming rods. The highest 16S rRNA gene pairwise sequence similarities for strain 35a^T were found with the strains of *Methylobacterium iners* 5317S-33^T (96.7%), '*Methylobacterium soli*' YIM 48816 (96.6%) and *Methylobacterium jeotgali* S2R03-9^T (96.3%). 16S rRNA gene sequence similarities with the type strains of all other recognized species of the genus *Methylobacterium* were below 96%. Major cellular fatty acids were C_{18:1}ω7c, C_{18:0} and C_{16:0}. The results of DNA–DNA hybridization experiments, analysis of *cpn60* gene sequences, fatty acid profiles, whole-cell MALDI-TOF/MS spectral pattern analysis, and physiological and biochemical tests allowed genotypic and phenotypic differentiation of strain 35a^T from its nearest phylogenetic neighbours. Strain 35a^T is therefore considered to represent a novel species within the genus *Methylobacterium*, for which the name *Methylobacterium oxalidis* sp. nov. is proposed. The type strain is 35a^T (=DSM 24028^T=NBRC 107715^T).

The genus *Methylobacterium* consists mostly of pink-pigmented, facultatively methylotrophic alphaproteobacteria, and at the time of writing, comprises of 35 species with validly published names (<http://www.bacterio.cict.fr/m/methylobacterium.html>). However, according to Kato *et al.* (2005), *Methylobacterium chloromethanicum* (McDonald *et al.*, 2001) and *Methylobacterium dichloromethanicum* (Doronina *et al.*, 2000) are later heterotypic synonyms of *Methylobacterium extorquens*, and *Methylobacterium rhodesianum* (Green *et al.*, 1988) is an earlier heterotypic synonym of *Methylobacterium lusitanum* (Doronina *et al.*, 2002) because they exhibited high DNA–DNA relatedness values (69–89%). Also, the species names '*Methylobacterium dankookense*' (Lee *et al.*, 2009) and '*Methylobacterium*

goesingense' (Idris *et al.*, 2006) were effectively but not validly published. Most recently, the species names *Methylobacterium gossipiicola* (Madhaiyan *et al.*, 2012), *Methylobacterium cerastii* (Wellner *et al.*, 2012), *Methylobacterium bullatum* (Hoppe *et al.*, 2011) and *Methylobacterium marchantiae* (isolated from a liverwort *Marchantia polymorpha* L.) (Schauer *et al.*, 2011) were validly published, while the name '*Methylobacterium soli*' (Cao *et al.*, 2011) has been only effectively, but not validly, published.

Methylobacteria can grow on single-carbon compounds such as methanol, formaldehyde and formate as sole carbon and energy sources, and also on a wide range of multi-carbon growth substances (Green, 1992). Members of the genus *Methylobacterium* are widespread, especially on plant surfaces, where they assimilate methanol emitted from plants as a product of pectin degradation (Corpe & Rheem, 1989). Analysis of the phyllospheric microbial community showed that members of the genus *Methylobacterium* are one of the predominant bacterial taxa on plant surfaces (Delmotte *et al.*, 2009); that site and plant species are important determinants of the composition of the bacterial community (Knief *et al.*, 2010a); and that isolates belonging to *M. extorquens* and *Methylobacterium tardum* are the most competitive colonizers on plants (Knief *et al.*, 2010b). Recently we isolated diverse strains of the genus *Methylobacterium* from plant leaf samples. One of the isolates, strain

Abbreviations: MALDI-TOF/MS, matrix-assisted laser desorption/ionization time-of-flight mass spectrometry; MDH, methanol dehydrogenase; PQQ, pyrroloquinoline quinone.

The GenBank/EMBL/DDBJ accession numbers for the nucleotide sequences reported in this study are AB607860 (strain 35a^T 16S rRNA gene), AB607859 (strain 35a^T partial *cpn60* gene), AB640729 (*Methylobacterium soli* KCTC 22810 partial *cpn60* gene), AB607858 (*Methylobacterium iners* DSM 19015^T partial *cpn60* gene) and AB608730 (*Methylobacterium jeotgali* LMG 23639^T partial *cpn60* gene).

Three supplementary figures are available with the online version of this paper.

35a^T isolated from *Oxalis corniculata*, showed 96.7% 16S rRNA gene sequence similarity to *M. iners* 5317S-33^T which is the closest related type strain. Here, strain 35a^T is described as a novel species of the genus *Methylobacterium*.

Leaves of *Oxalis corniculata* were collected at the Institute of Plant Science and Resources, Okayama University, Japan in April 2008. A piece of leaf blade (2 cm) was washed briefly with 50 ml sterile water, washed vigorously with 10 ml sterile water and the wash solution was spread on methanol medium. Methanol medium contained (per litre): 0.3 g (NH₄)₂HPO₄, 0.1 g KCl, 0.05 g yeast extract, 0.1 mg MgSO₄·H₂O, 10 ml vitamin solution, 10 ml metal solution, 5 ml methanol and 15 g agar. Vitamin solution contained (per litre): 0.4 g calcium pantothenate, 0.2 g inositol, 0.4 g niacin, 0.2 g *p*-aminobenzoic acid, 0.4 g pyridoxine HCl, 0.4 g thiamin HCl, 0.2 g biotin and 0.2 g vitamin B₁₂. The metal solution contained (per litre): 1.9 g CoCl₂·6H₂O, 1.0 g MnCl₂·6H₂O, 0.7 g ZnCl₂, 0.06 g H₃BO₃, 0.36 g Na₂MoO₄·H₂O, 0.24 g NiCl₂·6H₂O, 0.02 g CuCl₂·2H₂O. After incubation at 28 °C for 3–5 days, a pink-pigmented colony was picked and purified by restreaking on agar plates of the same composition.

Physiological and biochemical tests were carried out at 28 °C. Conventional biochemical tests were performed according to standard methods (Smibert & Krieg, 1994). Oxidation of various substrates was determined by using Biolog GN2 MicroPlates according to the manufacturer's instructions, at 2, 3, 5, 7 and 10 days with a microplate reader (Powerscan HT, Dainippon Sumitomo Pharma). Data from the nutritional tests are shown in the species description. Modified methanol medium (solidified with agar and containing no yeast extract) was also used in tests for the utilization of methylamine (0.1% w/v) as a carbon source. Salt tolerance was tested on R2A agar medium supplemented with 2% (w/v) NaCl. Nitrate reduction was tested in R2A broth containing 0.2% KNO₃.

Genomic DNA was extracted, purified (Marmur, 1961), and the 16S rRNA gene was amplified and sequenced (Lane, 1991). Sequencing was performed with an automated DNA sequencer (model 3130; Applied Biosystems) and ca. 1.5 kb sequence was determined. Phylogenetic analysis was performed using MEGA4 software (Tamura *et al.*, 2007) following multiple alignment of data by the CLUSTAL_X2 program (Larkin *et al.*, 2007) (Fig. S3). Genetic distances were obtained by the Kimura's two-parameter distance model (Kimura, 1980) and phylogenetic trees were constructed by the neighbour-joining (Saitou & Nei, 1987) and maximum-parsimony (Nei & Kumar, 2000) methods. The robustness for individual branches was estimated by bootstrapping with 1000 replicates (Felsenstein, 1985). Pairwise nucleotide sequence similarity values were calculated by using the algorithm of Myers & Miller (1988) using the EzTaxon server version 2.1 (<http://www.eztaxon.org>; Chun *et al.*, 2007). The alignment gap was not considered in the similarity calculation.

Pairwise 16S rRNA nucleotide similarity calculations indicated that the closest relatives of strain 35a^T were *M.*

iners 5317S-33^T (96.7%), '*M. soli*' YIM 48816 (96.6%) and *Methylobacterium jeotgali* S2R03-9^T (96.3%). The phylogenetic tree based on 16S rRNA gene sequences, constructed by using the neighbour-joining method, is shown in Fig. 1. The maximum-parsimony tree also produced similar results (Fig. S1, available in IJSEM online).

DNA–DNA hybridization was carried out at 50 °C for 3 h and analysed fluorometrically as described by Ezaki *et al.* (1989). The DNA–DNA relatedness between strain 35a^T and *M. iners* DSM 19015^T, that shared the highest 16S rRNA (96.7%) pairwise gene sequence similarity was 26.7% (mean of three replicate experiments). The DNA–DNA relatedness value between strain 35a^T and the recently described '*M. soli*' KCTC 22810, which showed 96.6% 16S rRNA pairwise gene sequence similarity, was 20%.

A 16S rRNA gene sequence similarity of less than 97% has been suggested as the threshold for defining a genomic species (Wayne *et al.*, 1987), which corresponds to a DNA–DNA hybridization value of less than 70% (Stackebrandt & Goebel, 1994). Recently, 98.7–99.0% 16S rRNA gene sequence similarity was the threshold recommended for species delineation by Stackebrandt & Ebers (2006). Strain 35a^T showed 16S rRNA gene sequence similarity below 97.0% with all recognized members of the genus *Methylobacterium*, and DNA–DNA hybridization experiments also confirmed that it represents a novel species.

Previous studies indicated that the *cpn60* gene, also known as *groEL* or *hsp60* (encoding the universally conserved 60 kDa chaperonin) is a more phylogenetically informative target than 16S rRNA (Sahin *et al.*, 2010). Therefore *cpn60* was selected for phylogenetic analysis as an alternative marker. *cpn60* sequences of strain 35a^T and its closest relatives were determined directly from PCR fragments using the method described by Hill *et al.* (2004). Primers H1594 and H1595 amplifying nucleotide positions 274–828 of *Escherichia coli cpn60* were used to amplify the universal target region of the gene in strain 35a^T and the type or reference strains of *M. iners*, *M. jeotgali* and '*M. soli*'. The PCR conditions for amplification were 1 min at 96 °C, 30 cycles of 30 s at 96 °C, 30 s at 58 °C and 30 s at 72 °C, followed by 5 min at 72 °C. Strain 35a^T showed 86.1%, 87% and 86.1% *cpn60* nucleotide sequence similarity with *M. iners* DSM 19015^T, *M. jeotgali* LMG 23639^T and '*M. soli*' KCTC 22810, respectively (data not shown).

For whole-cell matrix-assisted laser desorption/ionization time-of-flight mass spectrometry (MALDI-TOF/MS) analysis (Freiwald & Sauer, 2009), biomass from methanol agar cultures (grown for 3–5 days) was spotted on a stainless steel target plate. After air-drying, 1.5 µl matrix solution [saturated solution of sinapinic acid in 50% (v/v) acetonitrile and 2.5% (v/v) trifluoroacetic acid] was applied to each spot. Mass spectra were acquired using a MALDI-TOF Ultraflex mass spectrometer (Bruker Daltonics) in linear positive mode. The measured mass range of spectra was 2–20 kDa. Data from MALDI-TOF/MS analysis (Fig. S2) showed that strain 35a^T had a distinctly

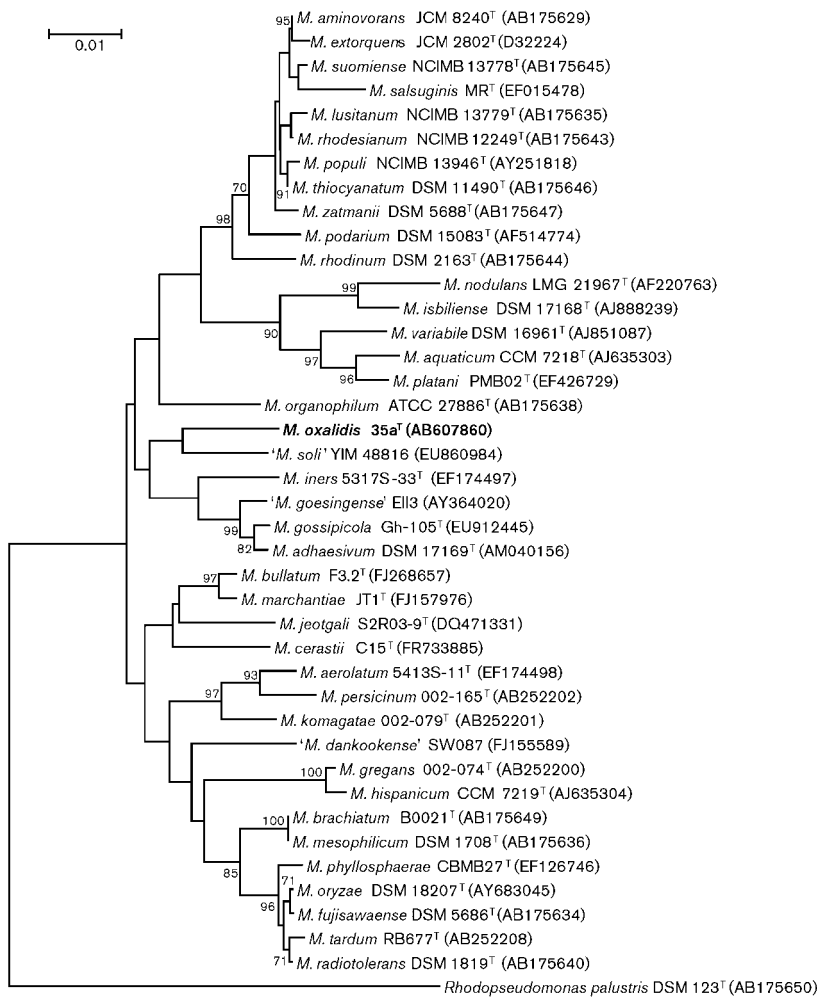


Fig. 1. Phylogenetic analysis based on 16S rRNA gene sequences constructed after multiple alignment of data (1291 nt) and clustering with neighbour-joining method. Bootstrap values $\geq 70\%$ based on 1000 replications are listed as percentages at the branching points. Bar, number of substitutions per nucleotide position. The sequence of *Rhodopseudomonas palustris* DSM 123^T was used as an outgroup.

different spectrum from those of *M. jeotgali* LMG 23639^T, *M. iners* DSM 19015^T, and '*M. soli*' KCTC 22810.

Selected physiological and biochemical differential characteristics of strain 35a^T are compared with those of related type strains in Table 1. Detailed phenotypic descriptions are given in the species description.

Fatty acid methyl ester (FAME) analysis of the whole-cell fatty acids was determined by the Identification Service of the DSMZ using GC (MIDI). A 40 mg sample of cells grown aerobically on R2A agar for 3 days at 28 °C was scraped from Petri dishes and fatty acid methyl esters were obtained by saponification, methylation and extraction using minor modifications of the methods of Miller (1982) and Kuykendall *et al.* (1988). The fatty acid methyl ester mixtures were separated using the Sherlock Microbial Identification System (MIS) (MIDI; Microbial ID) which consisted of a GC (6890N; Agilent) fitted with a 5% phenyl-methyl silicone capillary column (0.2 mm \times 25 m), a flame-ionization detector, automatic sampler (7683A; Agilent), and a computer with the MIDI database (Hewlett Packard). Peaks were automatically integrated and fatty acid names and percentages calculated by the MIS Standard

Software (Microbial ID). The GC parameters were as follows: carrier gas, ultrahigh-purity nitrogen; column head pressure 60 kPa; injection volume 2 μ l; column split ratio, 100:1; septum purge 5 ml min⁻¹; column temperature, 170–270 °C at 5 °C min⁻¹; injection port temperature, 240 °C; and detector temperature, 300 °C.

The major cellular fatty acids were C_{18:1} ω 7c (90.8%), C_{18:0} (3.3%) and C_{16:0} (1.95%). C_{18:0} 3-OH (1.75%) was the only hydroxylated fatty acid detected. In addition, an unidentified fatty acid with an equivalent chain-length of 14.959 (0.35%), Summed feature 2 (comprising C_{14:0} 3-OH or iso-C_{16:1}; 1.37%) and Summed feature 3 (comprising C_{16:1} ω 7c or iso-C_{15:0} 2-OH; 0.46%) were also detected. Thus, strain 35a^T could be distinguished from its phylogenetic relatives based on fatty acid profiles, in particular the absence of C_{16:0} 2-OH and the presence of C_{18:0} 3-OH.

Analysis of respiratory quinones was carried out by the Identification Service and Dr Brian Tindall, DSMZ, Braunschweig, Germany. DNA base composition analysis based on thermal denaturation temperature, carotenoid extraction and pigment spectral analysis were determined

Table 1. Differential characteristics of strain 35a^T and related members of the genus *Methylobacterium*

Strains: 1, *M. oxalidis* sp. nov. 35a^T; 2, '*M. soli*' YIM 48816, (data from Cao *et al.*, 2011); 3, *M. iners* 5317S-33^T (Weon *et al.*, 2008); 4, *M. jeotgali* S2R03-9^T (Aslam *et al.*, 2007); 5, *M. organophilum* JCM 2833^T (Kato *et al.*, 2005); 6, *M. marchantiae* JT1^T (Schauer *et al.*, 2011); 7, *M. cerastii* C15^T (Wellner *et al.*, 2012); 8, *M. bullatum* F3.2^T (Hoppe *et al.*, 2011); 9, *M. gossipicola* Gh-105^T (Madhaiyan *et al.*, 2012); 10, *M. phyllosphaerae* CBMB27^T (Madhaiyan *et al.*, 2009); 11, *M. platani* PMB02^T (Kang *et al.*, 2007). +, Positive; -, negative; (+), weakly positive; NA, data not available; v, variable reaction.

Characteristic	1	2	3	4	5	6	7	8	9	10	11
Isolation source	Phyllosphere of <i>Oxalis corniculata</i> L.	Forest soil	Urban air	Fermented seafood	Lake sediment	Thallus of a liverwort	Leaf surface	Surface of a bryophyte	Cotton phyllosphere	Leaf surface of rice	Leaf from a tree
Colony pigmentation	Pink	Pink	Pink	Non-pigmented	Pink	Red	Pinkish	Red	Light pink	Pink	Pink
Growth on/at:											
Peptone-rich media	+	+	-*	+	+	+	+	+	+	+	+
35 °C	+	+	-*	+/-*	+	-	-	-	-	-	-
2% NaCl	-	-	-	(+)	-	-	-	-	-	-	-
Nitrate reduction	-	-/+*	-*	+	-	(+)	NA	-	-	-	NA
Utilization of:											
D-Glucose	-	+	-	-	+	-	-	-	+	(+)	-
Methylamine	-	(+)*	-*	(+)*	+	-	-	NA	-	(+)	NA
D-Fructose	+	+	-	-	+	+	-	+	(+)	+	+
L-Arabinose	-	-	-	-	-	-	v	NA	+	+	+
D-Xylose	-	-	NA	+	+	-	-	-	NA	+	NA
Citrate	-	NA	-	-	-	(+)	-	v	+	+	-
Hydroxy fatty acids (% of total):											
C _{16:0} 2-OH	-	-	1.2	-	-	-	-	-	-	-	-
iso-C _{17:0} 3-OH	-	-	-	-	-	-	-	-	-	11.5	-
C _{18:0} 3-OH	1.8	-	-	-	2.5	-	-	0.9	-	0.9	3.46
DNA G+C content (mol%)	70.2	66.2	68.0	64.9	69.6	68.0	NA	67.1	64.2	66.8	68.5

*Data from this study.

according to Sahin *et al.* (2008). A siderophore assay was performed according to the published method of Schwyn & Neilands (1987). Methylobacteria oxidize methanol to formaldehyde through methanol dehydrogenase (MDH). MDH is a pyrroloquinoline quinone (PQQ)-linked enzyme. It plays an essential role in the first step of methanol oxidation by converting methanol to formaldehyde. In addition, PQQ has a favourable effect on plant growth (Duine & Frank, 1990; Choi *et al.*, 2008). Also, pink-pigmented methylobacteria have been found to be good hopanoid producers (Knani *et al.*, 1994). PQQ content in a 13 day culture in methanol medium was measured by HPLC [column, μ Bondasphere, 5 μ m, C18, 300Å (Waters); flow rate, 0.3 ml min⁻¹; temperature, 40 °C; isocratic elution with 10% (v/v) methanol and 90% (v/v) 6:4 mixture of 100 mM ammonium acetate and 100 mM acetic acid; detection, fluorescence (excitation 360 nm and emission 480 nm)]. Auxin (indole acetate) was measured as reported by Glickmann & Dessaux, 1995).

On the basis of the results described above, strain 35a^T represents a novel species within the genus *Methylobacterium*, for which the name *Methylobacterium oxalidis* sp. nov., is proposed.

Description of *Methylobacterium oxalidis* sp. nov.

Methylobacterium oxalidis [o.xa'li.dis. L. n. *oxalis* -idis, a sorrel, and also a scientific generic name (*Oxalis*); L. gen. n. *oxalidis* of a sorrel *Oxalis corniculata*, referring to the leaves from which the type strain was isolated].

Cells are Gram-reaction-negative, motile rods (1.3 × 1.8 μ m), and are strictly aerobic. Colonies are pink, convex and translucent with regular edges, slow-growing and 0.4 mm in diameter after 5 days on R2A agar plates at 28 °C. Growth occurs at 28–35 °C, but not at 37 °C. Nitrate is not reduced to nitrite. Oxidase-negative and catalase-positive; additional characteristics are given in Table 1. The following substrates produce positive results in Biolog GN2 plates: D-fructose, methyl pyruvate, acetic acid, formic acid, β -hydroxybutyric acid, DL-lactic acid, malonic acid, propionic acid, D-saccharic acid, succinic acid, bromosuccinic acid, succinamic acid and L-glutamic acid. Methylamine and dimethylamine are not utilized as sole carbon sources. DNase and urease tests are negative. Absorbance spectra of the pigment extracts in acetone-methanol mixture (3:1, v/v) have absorbance maxima at 528, 498 and 394 nm. Also has the ability to produce the siderophore, PQQ (2.3 μ g ml⁻¹) and indole-3-acetic acid (1.2 μ g ml⁻¹). Ubiquinone Q-10 (100%) is the predominant isoprenoid quinone. Major cellular fatty acids are C_{18:1 ω 7c}, C_{18:0} and C_{16:0}.

The type strain, 35a^T (=DSM 24028^T=NBRC 107715^T), was isolated from the leaves of *Oxalis corniculata*. The DNA G + C content of the type strain is 70.2 mol% (*T_m* method).

Acknowledgements

This work was supported by a Japan Science and Technology Agency grant of Research for Promoting Technological Seeds, and grants

from Sekisui Chemical Co. and Institute of Fermentation, Osaka (IFO). We wish to thank Ms. Y Fujitani for excellent technical assistance and Dr T. Enomoto for plant identification.

References

- Aslam, Z., Lee, C. S., Kim, K. H., Im, W. T., Ten, L. N. & Lee, S. T. (2007). *Methylobacterium jeotgali* sp. nov., a non-pigmented, facultatively methylotrophic bacterium isolated from jeotgal, a traditional Korean fermented seafood. *Int J Syst Evol Microbiol* **57**, 566–571.
- Cao, Y. R., Wang, Q., Jin, R. X., Tang, S. K., Jiang, Y., He, W. X., Lai, H. X., Xu, L. H. & Jiang, C. L. (2011). *Methylobacterium soli* sp. nov. a methanol-utilizing bacterium isolated from the forest soil. *Antonie van Leeuwenhoek* **99**, 629–634.
- Choi, O., Kim, J., Kim, J. G., Jeong, Y., Moon, J. S., Park, C. S. & Hwang, I. (2008). Pyrroloquinoline quinone is a plant growth promotion factor produced by *Pseudomonas fluorescens* B16. *Plant Physiol* **146**, 657–668.
- Chun, J., Lee, J. H., Jung, Y., Kim, M., Kim, S., Kim, B. K. & Lim, Y. W. (2007). EzTaxon: a web-based tool for the identification of prokaryotes based on 16S ribosomal RNA gene sequences. *Int J Syst Evol Microbiol* **57**, 2259–2261.
- Corpe, W. A. & Rheem, S. (1989). Ecology of the methylotrophic bacteria on living leaf surfaces. *FEMS Microbiol Lett* **62**, 243–249.
- Delmotte, N., Knief, C., Chaffron, S., Innerebner, G., Roschitzki, B., Schlapbach, R., von Mering, C. & Vorholt, J. A. (2009). Community proteogenomics reveals insights into the physiology of phyllosphere bacteria. *Proc Natl Acad Sci U S A* **106**, 16428–16433.
- Doronina, N. V., Trotsenko, Y. A., Tourova, T. P., Kuznetsov, B. B. & Leisinger, T. (2000). *Methylopila helvetica* sp. nov. and *Methylobacterium dichloromethanicum* sp. nov. – novel aerobic facultatively methylotrophic bacteria utilizing dichloromethane. *Syst Appl Microbiol* **23**, 210–218.
- Doronina, N. V., Trotsenko, Y. A., Kuznetsov, B. B., Tourova, T. P. & Salkinoja-Salonen, M. S. (2002). *Methylobacterium suomiense* sp. nov. and *Methylobacterium lusitanum* sp. nov., aerobic, pink-pigmented, facultatively methylotrophic bacteria. *Int J Syst Evol Microbiol* **52**, 773–776.
- Duine, J. A. & Frank, J. (1990). The role of PQQ and quinoproteins in methylotrophic bacteria. *FEMS Microbiol Rev* **87**, 221–226.
- Ezaki, T., Hashimoto, Y. & Yabuuchi, E. (1989). Fluorometric deoxyribonucleic acid-deoxyribonucleic acid hybridization in micro-dilution wells as an alternative to membrane filter hybridization in which radioisotopes are used to determine genetic relatedness among bacterial strains. *Int J Syst Bacteriol* **39**, 224–229.
- Felsenstein, J. (1985). Confidence limits on phylogenies: an approach using the bootstrap. *Evolution* **39**, 783–791.
- Freiwald, A. & Sauer, S. (2009). Phylogenetic classification and identification of bacteria by mass spectrometry. *Nat Protoc* **4**, 732–742.
- Glickmann, E. & Dessaux, Y. (1995). A critical examination of the specificity of the salkowski reagent for indolic compounds produced by phytopathogenic bacteria. *Appl Environ Microbiol* **61**, 793–796.
- Green, P. N. (1992). The genus *Methylobacterium*. In *The Prokaryotes*, 2nd edn, pp. 2342–2349. Edited by A. Balows, H. G. Trüper, M. Dworkin, W. Harder & K. H. Schleifer. New York: Springer.
- Green, P. N., Bousfield, I. J. & Hood, D. (1988). Three new *Methylobacterium* species: *M. rhodesianum* sp. nov., *M. zatmanii* sp. nov., and *M. fujiisawaense* sp. nov. *Int J Syst Evol Microbiol* **38**, 124–127.

- Hill, J. E., Penny, S. L., Crowell, K. G., Goh, S. H. & Hemmingsen, S. M. (2004). cpnDB: a chaperonin sequence database. *Genome Res* **14**, 1669–1675.
- Hoppe, T., Peters, K. & Schmidt, F. (2011). *Methylobacterium bullatum* sp. nov., a methylotrophic bacterium isolated from *Funaria hygrometrica*. *Syst Appl Microbiol* **34**, 482–486.
- Idris, R., Kuffner, M., Bodrossy, L., Puschenreiter, M., Monchy, S., Wenzel, W. W. & Sessitsch, A. (2006). Characterization of Ni-tolerant methylobacteria associated with the hyperaccumulating plant *Thlaspi goeingense* and description of *Methylobacterium goeingense* sp. nov. *Syst Appl Microbiol* **29**, 634–644.
- Kang, Y.-S., Kim, J., Shin, H.-D., Nam, Y.-D., Bae, J.-W., Jeon, C. O. & Park, W. (2007). *Methylobacterium platani* sp. nov., isolated from a leaf of the tree *Platanus orientalis*. *Int J Syst Evol Microbiol* **57**, 2849–2853.
- Kato, Y., Asahara, M., Arai, D., Goto, K. & Yokota, A. (2005). Reclassification of *Methylobacterium chloromethanicum* and *Methylobacterium dichloromethanicum* as later subjective synonyms of *Methylobacterium extorquens* and of *Methylobacterium lusitanum* as a later subjective synonym of *Methylobacterium rhodesianum*. *J Gen Appl Microbiol* **51**, 287–299.
- Kimura, M. (1980). A simple method for estimating evolutionary rates of base substitutions through comparative studies of nucleotide sequences. *J Mol Evol* **16**, 111–120.
- Knani, M., Corpe, W. A. & Rohmer, M. (1994). Bacterial hopanoids from pink-pigmented facultative methylotrophs (PPFMs) and from green plant surfaces. *Microbiology* **140**, 2755–2759.
- Knief, C., Ramette, A., Frances, L., Alonso-Blanco, C. & Vorholt, J. A. (2010a). Site and plant species are important determinants of the *Methylobacterium* community composition in the plant phyllosphere. *ISME J* **4**, 719–728.
- Knief, C., Frances, L. & Vorholt, J. A. (2010b). Competitiveness of diverse *Methylobacterium* strains in the phyllosphere of *Arabidopsis thaliana* and identification of representative models, including *M. extorquens* PA1. *Microb Ecol* **60**, 440–452.
- Kuykendall, L. D., Roy, M. A., O'Neill, J. J. & Devine, T. E. (1988). Fatty acids, antibiotic resistance, and deoxyribonucleic acid homology groups of *Bradyrhizobium japonicum*. *Int J Syst Bacteriol* **38**, 358–361.
- Lane, D. J. (1991). 16S/23S sequencing. In *Nucleic Acid Techniques in Bacterial Systematics*, pp. 115–175. Edited by E. Stackebrandt & M. Goodfellow. Chichester: Wiley.
- Larkin, M. A., Blackshields, G., Brown, N. P., Chenna, R., McGettigan, P. A., McWilliam, H., Valentin, F., Wallace, I. M., Wilm, A. & other authors (2007). CLUSTAL W and CLUSTAL X version 2.0. *Bioinformatics* **23**, 2947–2948.
- Lee, S. W., Oh, H. W., Lee, K. H. & Ahn, T. Y. (2009). *Methylobacterium dankookense* sp. nov., isolated from drinking water. *J Microbiol* **47**, 716–720.
- Madhaiyan, M., Poonguzhali, S., Kwon, S.-W. & Sa, T.-M. (2009). *Methylobacterium phyllosphaerae* sp. nov., a pink-pigmented, facultative methylotroph from the phyllosphere of rice. *Int J Syst Evol Microbiol* **59**, 22–27.
- Madhaiyan, M., Poonguzhali, S., Senthilkumar, M., Lee, J.-S. & Lee, K.-C. (2012). *Methylobacterium gossipiicola* sp. nov., a pink-pigmented facultative methylotrophic bacteria isolated from cotton phyllosphere. *Int J Syst Evol Microbiol* **62**, 162–167.
- Marmur, J. (1961). A procedure for the isolation of deoxyribonucleic acid from micro-organisms. *J Mol Biol* **3**, 208–218.
- McDonald, I. R., Doronina, N. V., Trotsenko, Y. A., McAnulla, C. & Murrell, J. C. (2001). *Hyphomicrobium chloromethanicum* sp. nov. and *Methylobacterium chloromethanicum* sp. nov., chloromethane-utilizing bacteria isolated from a polluted environment. *Int J Syst Evol Microbiol* **51**, 119–122.
- Miller, L. T. (1982). Single derivatization method for routine analysis of bacterial whole-cell fatty acid methyl esters, including hydroxy acids. *J Clin Microbiol* **16**, 584–586.
- Myers, E. W. & Miller, W. (1988). Optimal alignments in linear space. *Comput Appl Biosci* **4**, 11–17.
- Nei, M. & Kumar, S. (2000). *Molecular Evolution and Phylogenetics*. New York: Oxford University Press.
- Sahin, N., Kato, Y. & Yilmaz, F. (2008). Taxonomy of oxalotrophic *Methylobacterium* strains. *Naturwissenschaften* **95**, 931–938.
- Sahin, N., Gonzalez, J. M., Iizuka, T. & Hill, J. E. (2010). Characterization of two aerobic ultramicrobacteria isolated from urban soil and a description of *Oxalicibacterium solurbis* sp. nov. *FEMS Microbiol Lett* **307**, 25–29.
- Saitou, N. & Nei, M. (1987). The neighbor-joining method: a new method for reconstructing phylogenetic trees. *Mol Biol Evol* **4**, 406–425.
- Schauer, S., Kämpfer, P., Wellner, S., Spröer, C. & Kutschera, U. (2011). *Methylobacterium marchantiae* sp. nov., a pink-pigmented, facultatively methylotrophic bacterium isolated from the thallus of a liverwort. *Int J Syst Evol Microbiol* **61**, 870–876.
- Schwyn, B. & Neillands, J. B. (1987). Universal chemical assay for the detection and determination of siderophores. *Anal Biochem* **160**, 47–56.
- Smibert, R. M. & Krieg, N. R. (1994). Phenotypic characterization. In *Methods for General and Molecular Bacteriology*, pp. 607–654. Edited by P. Gerhardt. Washington, DC: American Society for Microbiology.
- Stackebrandt, E. & Ebers, J. (2006). Taxonomic parameters revisited: tarnished gold standards. *Microbiol Today* **33**, 152–155.
- Stackebrandt, E. & Goebel, B. M. (1994). Taxonomic note: a place for DNA-DNA reassociation and 16S rRNA sequence analysis in the present species definition in bacteriology. *Int J Syst Bacteriol* **44**, 846–849.
- Tamura, K., Dudley, J., Nei, M. & Kumar, S. (2007). MEGA4: molecular evolutionary genetics analysis (MEGA) software version 4.0. *Mol Biol Evol* **24**, 1596–1599.
- Wayne, L. G., Brenner, D. J., Colwell, R. R., Grimont, P. A. D., Kandler, O., Krichevsky, M. I., Moore, L. H., Moore, W. E. C., Murray, R. G. E. & other authors (1987). International Committee on Systematic Bacteriology. Report of the ad hoc committee on reconciliation of approaches to bacterial systematics. *Int J Syst Bacteriol* **37**, 463–464.
- Wellner, S. A., Lidders, N. & Kämpfer, P. (2012). *Methylobacterium cerastii* sp. nov., a novel species isolated from the leaf surface of *Cerastium holosteoides*. *Int J Syst Evol Microbiol* **62**, 917–924.
- Weon, H. Y., Kim, B. Y., Joa, J. H., Son, J. A., Song, M. H., Kwon, S. W., Go, S. J. & Yoon, S. H. (2008). *Methylobacterium iners* sp. nov. and *Methylobacterium aerolatum* sp. nov., isolated from air samples in Korea. *Int J Syst Evol Microbiol* **58**, 93–96.